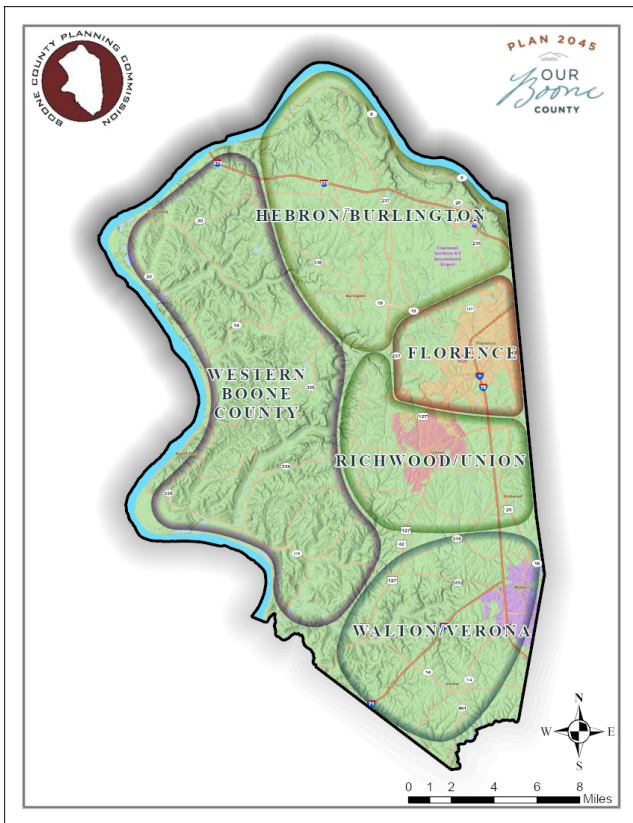


It's our job to create easy ways for everyone to communicate their wants and needs for community growth so everyone's voice is heard. Taking a few minutes to fill out the surveys below could completely alter the course of Boone County's future for the better. You may also visit ourboonecounty.com/surveys to access the surveys and to look at results from the rest of the community.

PUBLIC ENGAGEMENT SURVEY

The Our Boone County Plan 2045 Engagement Survey asks you about what matters most to you, as someone who lives, works, and plays in Boone County, Kentucky. This survey covers many topics important to our county, including, Housing, Environment & Natural Resources, Economy, Transportation, Community Facilities, Utilities, and Recreation. You may access the survey with the QR Code #1 below.

FOCUS AREA MAP



The survey asks you to choose your focus area: Florence; Hebron/Burlington; Richwood/Union; Walton/ Verona; or Western Boone County. Although we are one county, each focus area faces unique challenges moving into the future. We are interested in your preferences for your future. Please respond based on your specific focus area.

The survey consists of 20 questions, however, not all of them are required. Please provide a valid email address before you submit your survey.

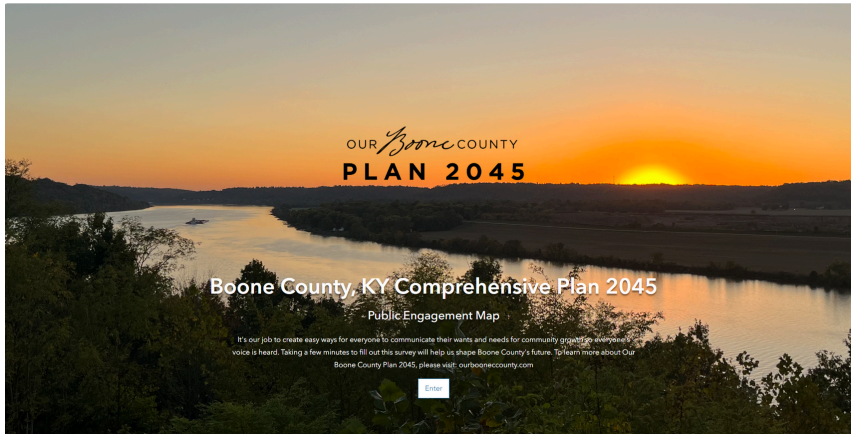
#1 FOCUS SURVEY



If you have any questions about the Our Boone County Plan 2045 Project, please contact Community Development Services Director, Jenna LeCount, at plancom@boonecountyky.org or (859) 334-2196.



ENGAGEMENT MAP

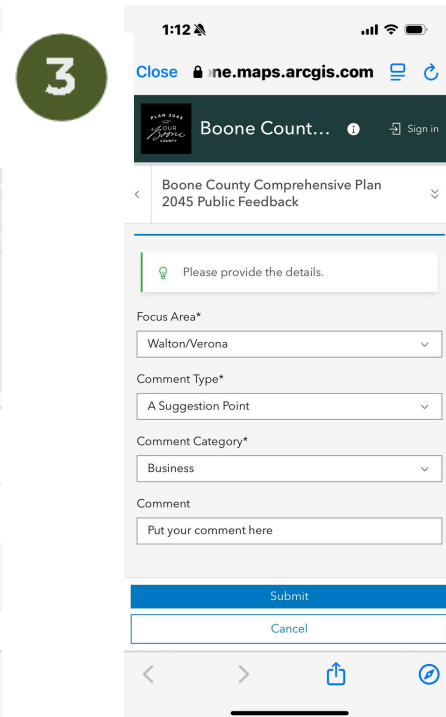
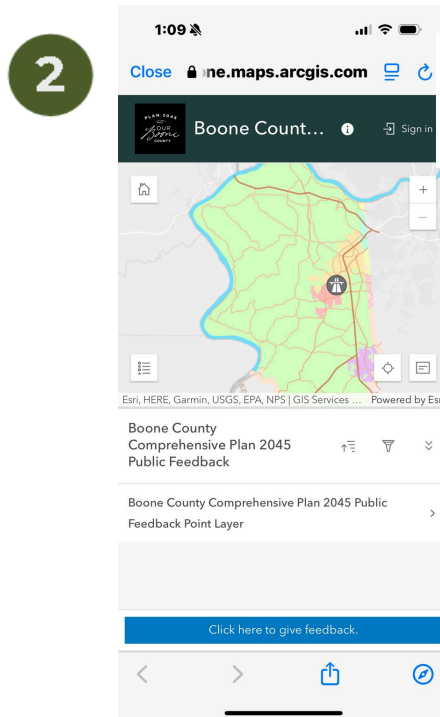
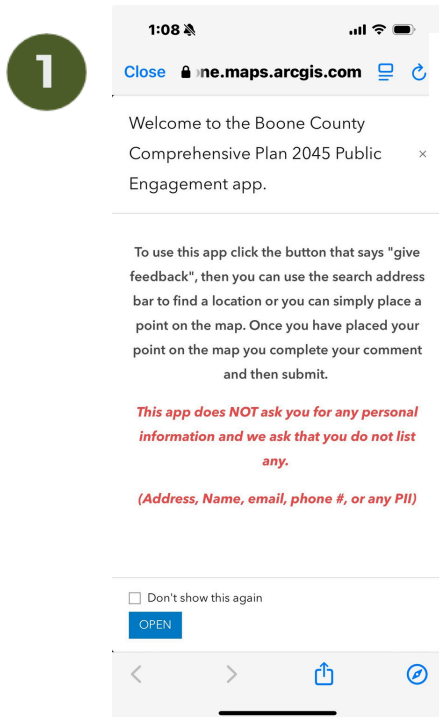


#2 MAP SURVEY



The Our Boone County Plan 2045 Engagement Map app allows you to click on a location or add an address within Boone County and tell us what you think about that location. It could be a park, a neighborhood, an intersection, really anything you would like us to know that you like or consider a challenge to our community. We would like you to pay attention to your focus area, but you may provide responses anywhere on the map. You may access the map with the QR Code on the left.

The app will not ask for personal information and you may submit as many times as you would like. Your results are updated in real-time and other community members are able to see your anonymous submissions and can vote with a thumbs up or thumbs down, whether they agree with your comment or not.



To learn more about Our Boone County Plan 2045, please visit: ourboonecounty.com or scan:

